

VICINITY MAP  
NOT TO SCALE

**SURVEYOR'S CERTIFICATION:**

I HEREBY CERTIFY THE BEST OF MY KNOWLEDGE AND BELIEF, THAT THIS PLAN REPRESENTS AN ACTUAL GROUND SURVEY PERFORMED UNDER MY DIRECTION AND SUPERVISION AND CONFORMS TO THE REQUIREMENTS FOR THE MINIMUM STANDARDS FOR PROPERTY BOUNDARY SURVEYS AS FOUND IN THE LOUISIANA ADMINISTRATIVE CODE FOR CLASS "C" SURVEYS.

**SURVEY REFERENCE:**

● PLAT OF SURVEY TO INDICATE A 121.11± ACRE TRACT BY PAN AMERICAN ENGINEERS - ALEXANDRIA, INC., DRAWING NO. 10197, DATED JUNE 29, 2005, LAST REVISION DATED JULY 25, 2005, PREPARED FOR UTLX MANUFACTURING, INC.

**BASIS OF BEARINGS:**

● THE BEARINGS INDICATED HEREON ARE LOUISIANA STATE PLANE GRID BEARINGS RELATIVE TO THE NORTH AMERICAN DATUM OF 1983 (NAD83), LOUISIANA NORTH ZONE (1701), U.S. SURVEY FEET AND WERE DERIVED FROM GPS OBSERVATIONS FURNISHED BY A NATIONAL GEODETIC SURVEY (NGS) ONLINE POSITIONING USER SERVICE (OPUS) UTILIZING BASE STATIONS: INSU NORTHWESTERN S.U. CORS ARP, OAKH OAKDALE HS CORS ARP AND LSUA LSU-ALEXANDRIA CORS ARP.

**BASIS OF ELEVATIONS:**

● ELEVATIONS HEREON ARE BASED UPON THE NORTH AMERICAN VERTICAL DATUM (NAVD) OF 1988, GEOID 09 AND WERE DERIVED FROM GPS OBSERVATIONS FURNISHED BY A NGS OPUS SOLUTION REPORT UTILIZING BASE STATIONS: INSU NORTHWESTERN S.U. CORS ARP, OAKH OAKDALE HS CORS ARP AND LSUA LSU-ALEXANDRIA CORS ARP.

**FLOOD NOTE:**

● THE SURVEYED TRACT IS LOCATED IN A8 PER FEMA FLOOD INSURANCE RATE MAP FOR RAPIDES PARISH, LOUISIANA, COMMUNITY PANEL NO. 220145 0140 D, MAP REVISED DATE: SEPTEMBER 3, 1997.

● ZONE A8 - AREAS OF 100-YEAR FLOOD WHERE BASE FLOOD ELEVATION AND FLOOD HAZARD FACTORS HAVE BEEN DETERMINED. PRORATED BASE FLOOD ELEVATION FOR SITE AS SCALED FROM FLOOD MAP = 82.4± FEET.

**NOTES:**

● RESEARCH OF THE RECORDS OF RAPIDES PARISH FOR SERVITUDES OR RIGHTS-OF-WAYS WHICH MAY ENCUMBER THE SURVEYED TRACT WAS NEITHER PERFORMED BY NOR REQUESTED OF PAN AMERICAN ENGINEERS - ALEXANDRIA, INC.

● SECTION LINES INDICATED HEREON ARE APPROXIMATE AND WERE SCALED FROM GOVERNMENT LAND OFFICE (GLO) OFFICIAL TOWNSHIP MAP FOR T4N-R2W, SOUTH WESTERN DISTRICT. DISCREPANCIES BETWEEN SECTION LINES PLOTTED ON THE UNITED STATES GEOLOGICAL SURVEY (USGS) 7.5 MINUTE QUADRANGLE MAP FOR RAPIDES, LOUISIANA AND THE AFOREMENTIONED TOWNSHIP MAP WERE FOUND.

● CALLS L6 THRU L19 REPRESENT A MEANDER OF THE APPROXIMATE EASTERN HIGH BANK OF BIG BAYOU.

● CALLS L20 & L21 REPRESENT A MEANDER OF THE APPROXIMATE SOUTHERN HIGH BANK OF IRISH DITCH NO. 2.

● INFORMATION REGARDING THE PRESENCE, SIZE AND LOCATION OF UNDERGROUND UTILITIES IS SHOWN HEREON. THIS INFORMATION HAS BEEN SHOWN BASED ON THE LOCATION OF THE ABOVE GROUND APPURTENANCES, AVAILABLE DESIGN PLANS, AND FLAGS AND PAINT PLACED BY THE UTILITY PROTECTION SERVICE. NO CERTIFICATION IS MADE AS TO THE ACCURACY OR THOROUGHNESS OF THE INFORMATION CONCERNING UNDERGROUND UTILITIES AND STRUCTURES SHOWN HEREON. PER LOUISIANA LAW, THE UNDERGROUND UTILITIES PROTECTION SERVICE MUST BE CALLED PRIOR TO THE COMMENCEMENT OF ANY AND ALL EARTH DISTURBING ACTIVITIES.

● THE SURVEYED TRACT IS NOT WITHIN THE CORPORATE LIMITS OF THE CITY OF ALEXANDRIA AND IS NOT SUBJECT TO ZONING REQUIREMENTS ESTABLISHED BY THE CITY OF ALEXANDRIA.

**LEGEND**

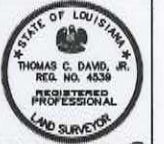
- OHE OVERHEAD ELECTRIC LINE
- OHE-TV OVERHEAD ELECTRIC & TELEVISION LINE
- OHT OVERHEAD TELEPHONE LINE
- W WATER LINE (TYPE & SIZE AS INDICATED)
- FOC FIBER OPTIC CABLE
- 0 NATURAL GAS LINE (TYPE & SIZE AS INDICATED)
- SFM SANITARY SEWER FORCE MAIN W/FLOW DIRECTION ARROW
- S GRAVITY FLOW SANITARY SEWER FORCE MAIN W/FLOW DIRECTION ARROW
- P PROPERTY LINE
- CL CONTOUR LINE W/ELEVATION LABEL
- 5/8" FOUND 5/8" DIAMETER IRON ROD
- SET 5/8" DIAMETER IRON ROD
- GUY ANCHOR
- UTILITY POLE
- SANITARY SEWER MANHOLE
- FIRE HYDRANT
- SANITARY SEWER CLEANOUT
- NATURAL GAS LINE VALVE
- WATER LINE VALVE
- SIGNAGE (TYPE AS INDICATED)
- NATURAL GAS LINE VENT PIPE
- TEMPORARY BENCH MARK LOCATION IDENTIFIER
- POINT OF COMMENCEMENT
- POINT OF BEGINNING
- RIGHT-OF-WAY
- INVERT
- POLYETHYLENE
- POLYVINYLCHLORIDE
- DUCTILE IRON
- SECTION NUMBER
- RIP RAP
- CONCRETE SURFACE
- ASPHALT SURFACE
- GRAVEL SURFACE

**CURVE DATA TABLE**

NUMBER	CHORD DIRECTION	TANGENT	RADIUS	ARC LENGTH	CHORD LENGTH
C1	S 13°02'45" E	141.79'	714.48'	279.95'	278.16'
C2	S 03°51'43" W	71.10'	714.48'	141.73'	141.50'
C3	S 17°11'09" W	81.39'	582.75'	122.33'	122.11'

**LINE TABLE**

NUMBER	DIRECTION	DISTANCE
C1	SEE CURVE DATA TABLE	
BEGIN	34.07± ACRE TRACT TRAVERSE	
C2	SEE CURVE DATA TABLE	
C3	SEE CURVE DATA TABLE	
L1	S 23°11'59" W	1711.74'
L2	S 23°11'59" W	388.21'
L3	N 63°30'55" W	231.33'
L4	N 77°41'33" W	201.11'
L5	S 82°40'49" W	190.08'
L6	N 10°32'19" E	87.24'
L7	N 17°17'32" W	52.27'
L8	N 13°14'31" E	59.53'
L9	N 41°04'40" E	64.11'
L10	N 67°45'32" E	204.91'
L11	N 40°16'26" E	126.29'
L12	N 20°44'25" E	145.52'
L13	N 10°28'40" W	172.13'
L14	N 03°36'00" W	91.63'
L15	N 01°19'15" W	205.92'
L16	N 11°19'35" E	229.36'
L17	N 16°11'11" E	421.92'
L18	N 22°50'33" E	317.28'
L19	N 23°26'05" E	106.93'
L20	N 88°42'08" E	397.32'
L21	N 87°25'56" E	402.55'



THE INFORMATION CONTAINED HEREON IS OF A PROPRIETARY NATURE AND IS NOT TO BE REPRODUCED OR TRANSMITTED IN ANY FORM OR BY ANY MEANS, ELECTRONIC OR MECHANICAL, INCLUDING PHOTOCOPYING, RECORDING, OR BY ANY INFORMATION STORAGE AND RETRIEVAL SYSTEM, WITHOUT THE WRITTEN CONSENT OF PAN AMERICAN ENGINEERS - ALEX., INC.

RECEIPT OF POSSESSION OF THIS INFORMATION CONFERS NO RIGHT OR LICENSE TO USE OR INCLUDE IN ANY OTHER DOCUMENT OR TO REPRODUCE OR TRANSMIT IN ANY FORM OR BY ANY MEANS, ELECTRONIC OR MECHANICAL, INCLUDING PHOTOCOPYING, RECORDING, OR BY ANY INFORMATION STORAGE AND RETRIEVAL SYSTEM, WITHOUT THE WRITTEN CONSENT OF PAN AMERICAN ENGINEERS - ALEX., INC.

COPYRIGHT 2012 BY PAN AMERICAN ENGINEERS - ALEX., INC. ALL RIGHTS RESERVED.

DRAWN BY P.A.E.  
DATE 3/7/12

REVISION

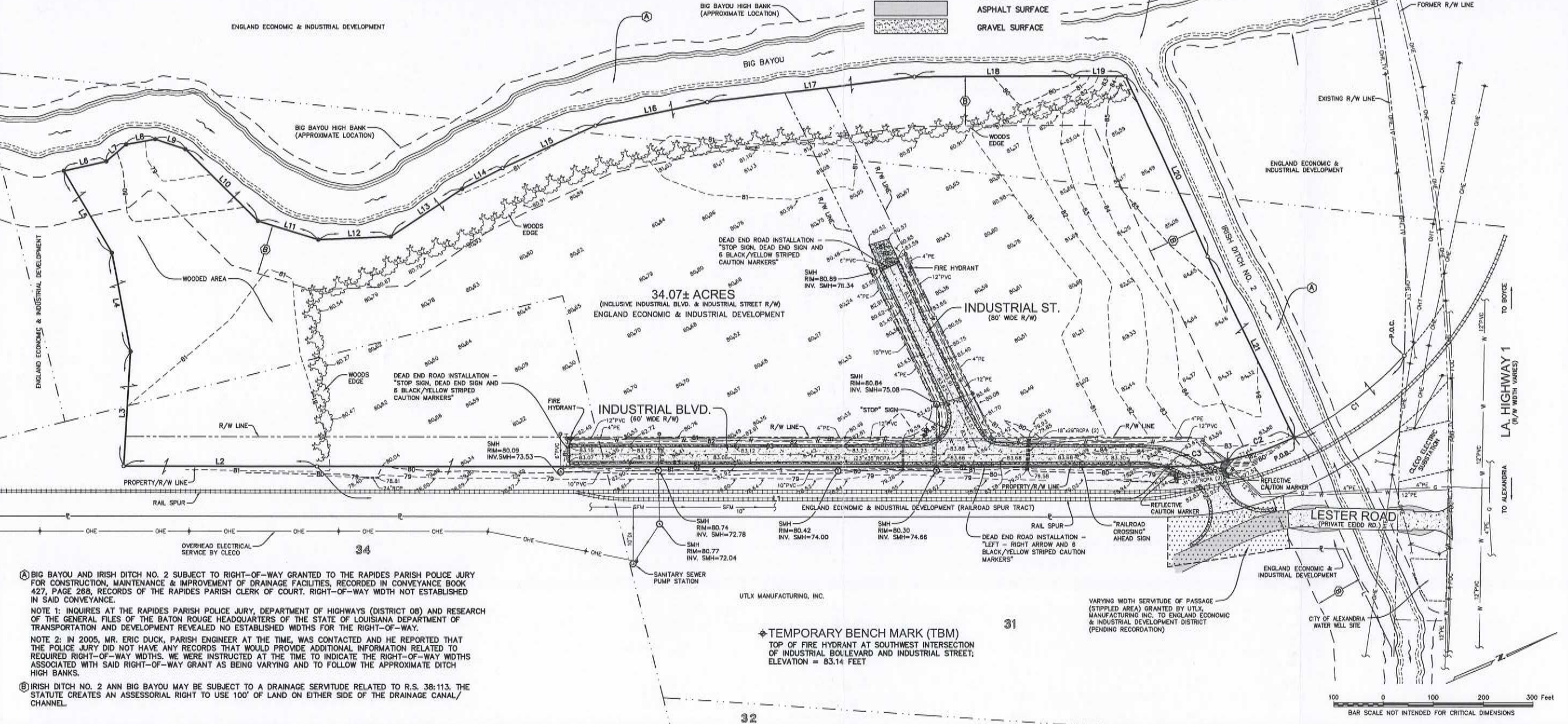
REVISION	DATE

CHECKED T.C.D.  
BOOK NO. N/B  
JOB NO. 9502

DWG. NO. 11967  
FILE NO. 2012-7  
SCALE 1"=100'

REQUESTED BY: ENGLAND ECONOMIC & INDUSTRIAL DEVELOPMENT DISTRICT  
PROJECT: BOUNDARY & TOPOGRAPHIC SURVEY OF A PROPOSED 34.07± ACRE HEAVY INDUSTRIAL SITE LOCATED IN SECTIONS 30, 31 & 34, TOWNSHIP 4 NORTH, RANGE 2 WEST, SOUTH WESTERN DISTRICT, RAPIDES PARISH, LOUISIANA

SHEET NUMBER  
**1**  
OF 1



(A) BIG BAYOU AND IRISH DITCH NO. 2 SUBJECT TO RIGHT-OF-WAY GRANTED TO THE RAPIDES PARISH POLICE JURY FOR CONSTRUCTION, MAINTENANCE & IMPROVEMENT OF DRAINAGE FACILITIES, RECORDED IN CONVEYANCE BOOK 427, PAGE 268, RECORDS OF THE RAPIDES PARISH CLERK OF COURT. RIGHT-OF-WAY WIDTH NOT ESTABLISHED IN SAID CONVEYANCE.

NOTE 1: INQUIRES AT THE RAPIDES PARISH POLICE JURY, DEPARTMENT OF HIGHWAYS (DISTRICT 08) AND RESEARCH OF THE GENERAL FILES OF THE BATON ROUGE HEADQUARTERS OF THE STATE OF LOUISIANA DEPARTMENT OF TRANSPORTATION AND DEVELOPMENT REVEALED NO ESTABLISHED WIDTHS FOR THE RIGHT-OF-WAY.

NOTE 2: IN 2005, MR. ERIC DUCK, PARISH ENGINEER AT THE TIME, WAS CONTACTED AND HE REPORTED THAT THE POLICE JURY DID NOT HAVE ANY RECORDS THAT WOULD PROVIDE ADDITIONAL INFORMATION RELATED TO REQUIRED RIGHT-OF-WAY WIDTHS. WE WERE INSTRUCTED AT THE TIME TO INDICATE THE RIGHT-OF-WAY WIDTHS ASSOCIATED WITH SAID RIGHT-OF-WAY GRANT AS BEING VARYING AND TO FOLLOW THE APPROXIMATE DITCH HIGH BANKS.

(B) IRISH DITCH NO. 2 ANN BIG BAYOU MAY BE SUBJECT TO A DRAINAGE SERVITUDE RELATED TO R.S. 38:113. THE STATUTE CREATES AN ASSESSORIAL RIGHT TO USE 100' OF LAND ON EITHER SIDE OF THE DRAINAGE CANAL/CHANNEL.

