

# EXHIBIT 5 TOPOGRAPHICAL MAP



THE INFORMATION CONTAINED HEREIN IS OF A PROPRIETARY NATURE AND IS SUBMITTED IN CONFIDENCE FOR USE BY THE CLIENTS OF PAN AMERICAN ENGINEERS - ALEXANDRIA, INC. THIS DOCUMENT HAS BEEN PREPARED SPECIFICALLY FOR THE ENGLAND ECONOMIC & INDUSTRIAL DEVELOPMENT DISTRICT AND IS NOT TO BE REPRODUCED OR USED FOR ANY OTHER PROJECT, PURPOSE, LOCATION, OR JURISDICTION. REPRODUCTION, PRODUCTION, DISTRIBUTION, OR DISSEMINATION OF THIS DOCUMENT WITHOUT THE WRITTEN CONSENT OF PAN AMERICAN ENGINEERS - ALEXANDRIA, INC. IS STRICTLY PROHIBITED. THE INFORMATION CONTAINED HEREIN IS AND REMAINS THE PROPERTY OF PAN AMERICAN ENGINEERS - ALEXANDRIA, INC. RECEIPT OR POSSESSION OF THIS INFORMATION CONFERES NO RIGHT OR LICENSE TO USE OR DISCLOSE TO ANY OTHER PARTY. THE USER SHALL BE RESPONSIBLE FOR OBTAINING ALL NECESSARY PERMITS AND AUTHORIZATIONS FOR ANY BUT AUTHORIZED PURPOSES. ENGINEERS - ALEXANDRIA, INC. ALL RIGHTS RESERVED.

DRAWN BY P.A.E.  
DATE 12/13/12

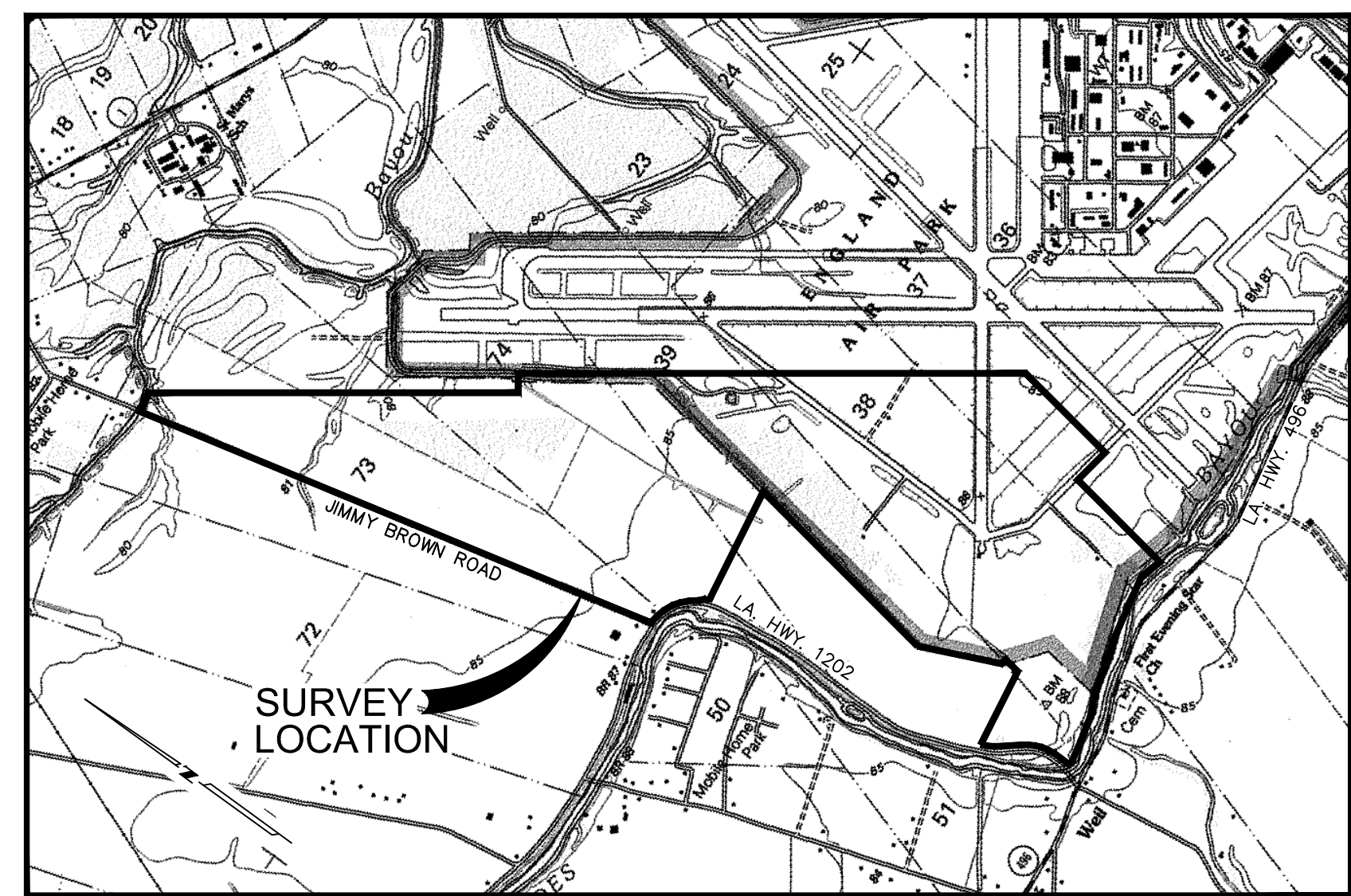
REVISION	DATE
CHECKED	T.C.D.
BOOK NO.	N/A
JOB NO.	9599

DWG. NO. 12096-B  
FILE NO. 2012-84  
SCALE AS SHOWN

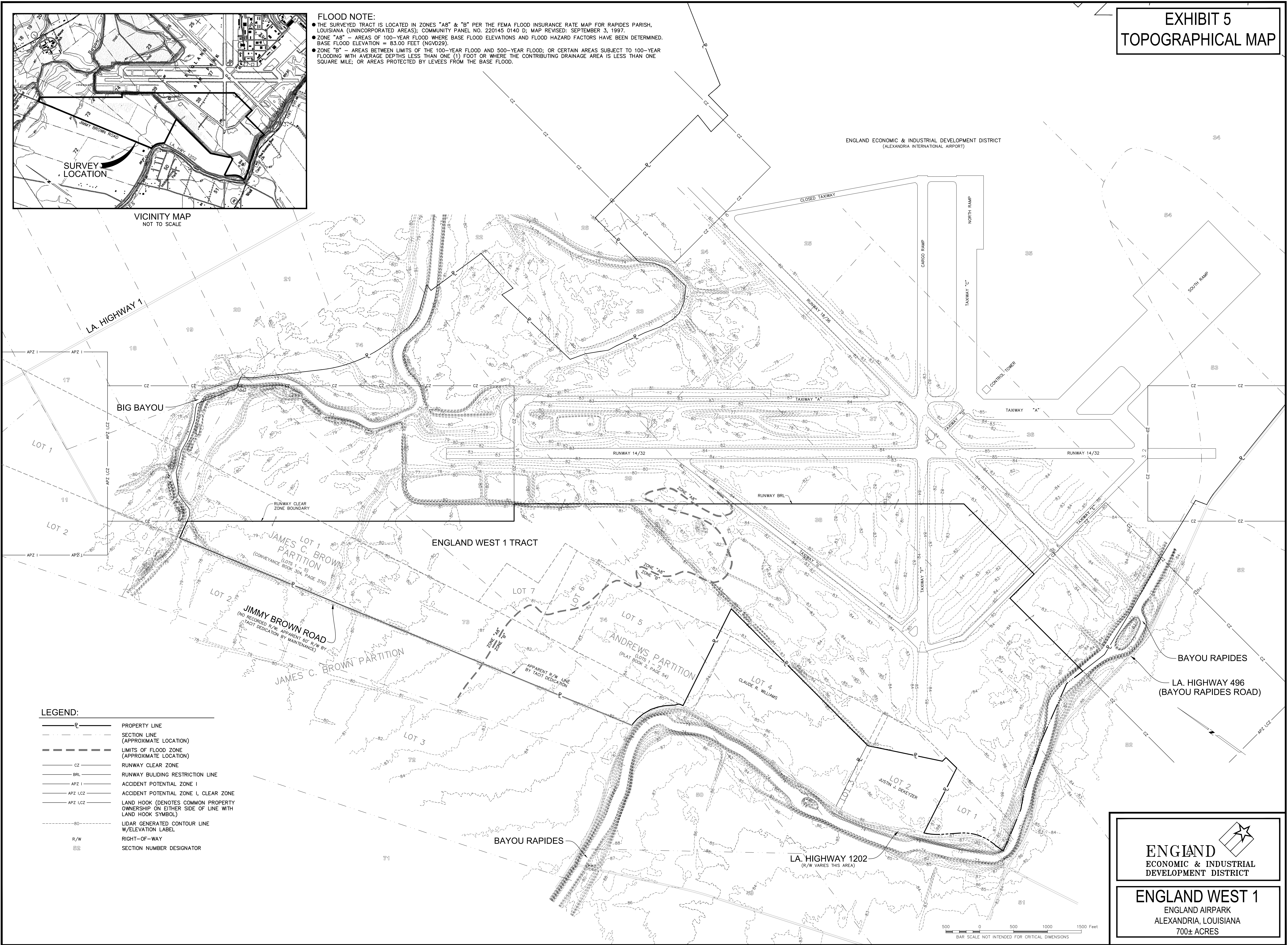
REQUESTED: ENGLAND ECONOMIC & INDUSTRIAL DEVELOPMENT DISTRICT  
PROJECT: LIGHT DETECTION AND RANGING (LIDAR) GENERATED TOPOGRAPHIC SURVEY OF A 708.839± ACRE TRACT LOCATED IN SECTIONS 37, 38, 39, 73 & 74, TOWNSHIP 4 NORTH, RANGE 2 WEST, SOUTH WESTERN DISTRICT, RAPIDES PARISH, LOUISIANA

SHEET NUMBER  
**1**  
OF 1

**FLOOD NOTE:**  
 ● THE SURVEYED TRACT IS LOCATED IN ZONES "A8" & "B" PER THE FEMA FLOOD INSURANCE RATE MAP FOR RAPIDES PARISH, LOUISIANA (UNINCORPORATED AREAS); COMMUNITY PANEL NO. 220145 0140 D; MAP REVISED: SEPTEMBER 3, 1997.  
 ● ZONE "A8" - AREAS OF 100-YEAR FLOOD WHERE BASE FLOOD ELEVATIONS AND FLOOD HAZARD FACTORS HAVE BEEN DETERMINED. BASE FLOOD ELEVATION = 83.00 FEET (NGVD29).  
 ● ZONE "B" - AREAS BETWEEN LIMITS OF THE 100-YEAR FLOOD AND 500-YEAR FLOOD; OR CERTAIN AREAS SUBJECT TO 100-YEAR FLOODING WITH AVERAGE DEPTHS LESS THAN ONE (1) FOOT OR WHERE THE CONTRIBUTING DRAINAGE AREA IS LESS THAN ONE SQUARE MILE; OR AREAS PROTECTED BY LEVEES FROM THE BASE FLOOD.

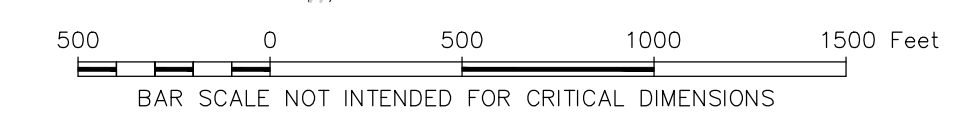


VICINITY MAP  
NOT TO SCALE



**LEGEND:**

	PROPERTY LINE
	SECTION LINE (APPROXIMATE LOCATION)
	LIMITS OF FLOOD ZONE (APPROXIMATE LOCATION)
	RUNWAY CLEAR ZONE
	RUNWAY BUILDING RESTRICTION LINE
	ACCIDENT POTENTIAL ZONE I
	ACCIDENT POTENTIAL ZONE I, CLEAR ZONE
	LAND HOOK (DENOTES COMMON PROPERTY OWNERSHIP ON EITHER SIDE OF LINE WITH LAND HOOK SYMBOL)
	LIDAR GENERATED CONTOUR LINE W/ELEVATION LABEL
	RIGHT-OF-WAY
	SECTION NUMBER DESIGNATOR



**ENGLAND**  
ECONOMIC & INDUSTRIAL  
DEVELOPMENT DISTRICT

**ENGLAND WEST 1**  
ENGLAND AIRPARK  
ALEXANDRIA, LOUISIANA  
700± ACRES