

England Airpark Building #3509

2351 Vandenburg Drive
Building Number 3509

Property Overview

Usage: Hospital

Size: 108,155 sq. ft.

Dimensions: 309'-0" x 138'-6"

Door Height: 7'-0" +

Internal Clear Height : 8' +

Shop Area: 55,424 sq. ft.

Office Area: 52,731 sq. ft.

Type of Construction: Reinforced Concrete and Brick

Occupancy Status: Leased

Year Build: 1971

Last Renovation: 2002

Building Condition: Excellent

Available Power: 110 & 220



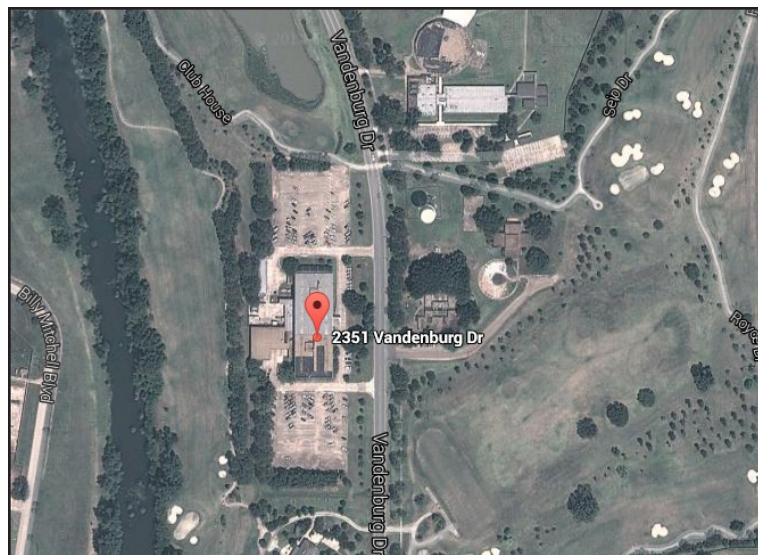
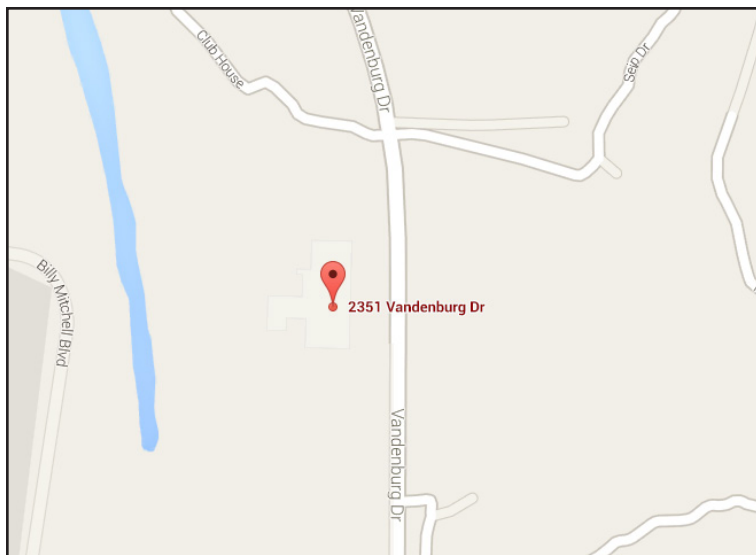
More Information Online



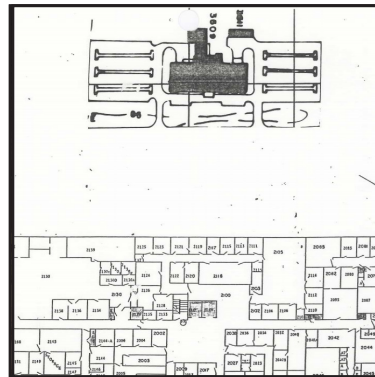
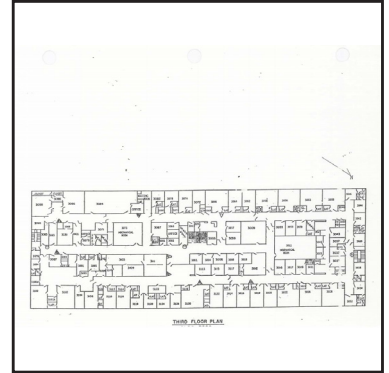
<http://www.Englandairpark.org/sites/buildingsite-3509>

QR Code

Scan this image with your mobile device:



Property Images



Contact Information



David Broussard, Jr.
Airpark Development Manager
Phone: 318-427-6407
Email: DBroussard@englandairpark.org